

# ZINGASPRAY FOR FLM

## TITLE

## PAGE NO.

- |  |       |
|--|-------|
| 1. ZINGA AFTER 1 YEAR APPLICATION                        | 2 & 3 |
| 2. EXAMPLE OF POOR ZINGA APPLICATION                     | 4 & 5 |
| 3. BENEFITS AND PROPER SURFACE<br>PREPARATION WITH ZINGA | 6     |
| 4. EXAMPLE OF PROPER ZINGA APPLICATION                   | 7 & 8 |

COMPILED BY: ANEESHA SACHDEV  
DIRECTOR OF BUSINESS DEVELOPMENT  
ZINGAMETALL SINGAPORE PTE. LTD.


## ZINGA AFTER 1 YEAR APPLICATION

LOCATION: E. M. XXX

DESCRIPTION: FRONT LINE MAINTENANCE

PRODUCT: ZINGASPRAY

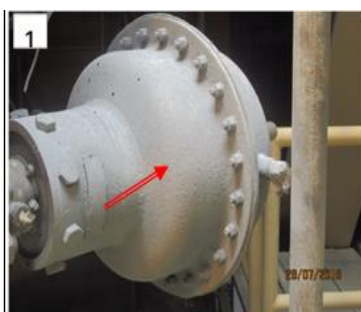
SURFACE PREPARATION: SSPC SP2 (HAND TOOL CLEANING)

BEFORE ZINGASPRAY APPLICATION	APPLICATION INSPECTION DATE: 29 JUL 2018	APPLICATION INSPECTION DATE: 17 NOV 2018	APPLICATION INSPECTION DATE: 6 JUN 2019
		<p><b>LOCATION: XXX</b>  <b>PRODUCT: ZINGASPRAY</b>  <b>DURATION COATED: 3 MONTHS 20 DAYS</b></p> <p>VISUAL INSPECTION ON ZINGASPRAY APPLIED ON 27<sup>TH</sup> JULY 2018 FOUND COATING ADHERENT AND NO SIGN OF CORROSION</p>	<p><b>LOCATION: XXX</b>  <b>PRODUCT: ZINGASPRAY</b>  <b>DURATION COATED: 11 MONTHS</b></p> <p>COATING WAS FOUND ADHERENT AND NO SIGN OF CORROSION</p>

### \*\*ECB – ESTIMATED COATING BREAKDOWN



Location A 21 SSV drum



ECB 0%



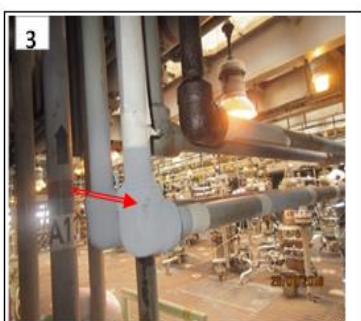
ECB 0%



ECB 0%



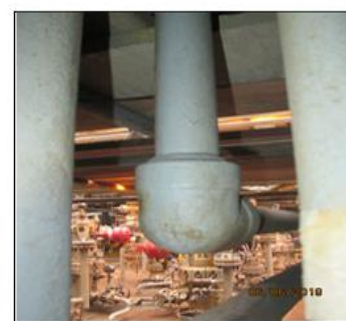
2;HP gas line




ECB 0%



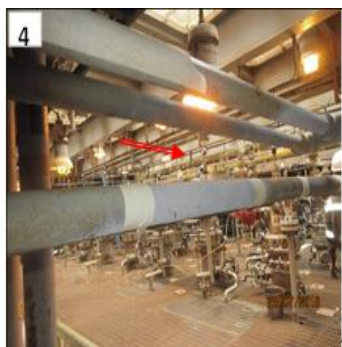
ECB 0%



ECB 0%

BEFORE ZINGASPRAY APPLICATION	APPLICATION INSPECTION DATE: 29 JUL 2018	APPLICATION INSPECTION DATE: 17 NOV 2018	APPLICATION INSPECTION DATE: 6 JUN 2019
		<b>LOCATION: XXX</b> <b>PRODUCT: ZINGASPRAY</b> <b>DURATION COATED: 3 MONTHS 20 DAYS</b>  VISUAL INSPECTION ON ZINGASPRAY APPLIED ON 27 <sup>TH</sup> JULY 2018 FOUND COATING ADHERENT AND NO SIGN OF CORROSION	<b>LOCATION: XXX</b> <b>PRODUCT: ZINGASPRAY</b> <b>DURATION COATED: 11 MONTHS</b>  COATING WAS FOUND ADHERENT AND NO SIGN OF CORROSION

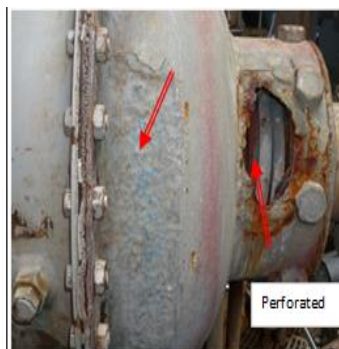
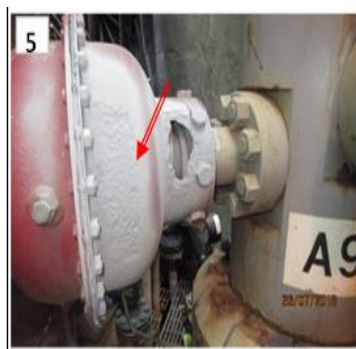
**\*\*ECB – ESTIMATED COATING BREAKDOWN**



ECB 0%



ECB 0%



ECB 0%



ECB 0%



ECB 0%



ECB 0%



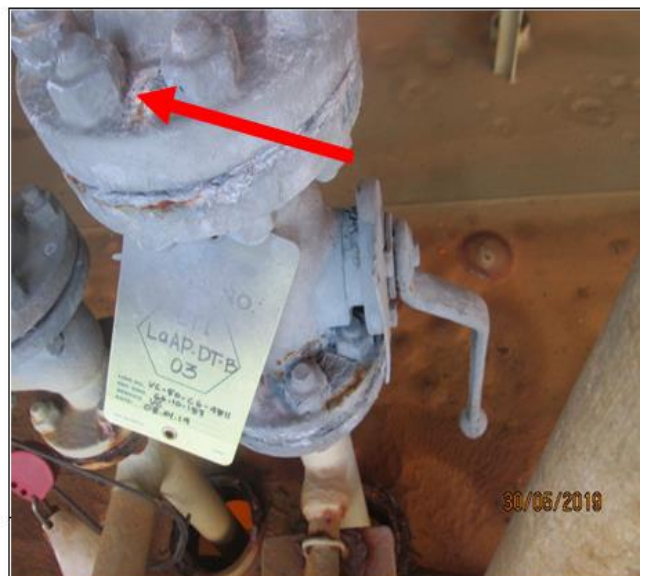
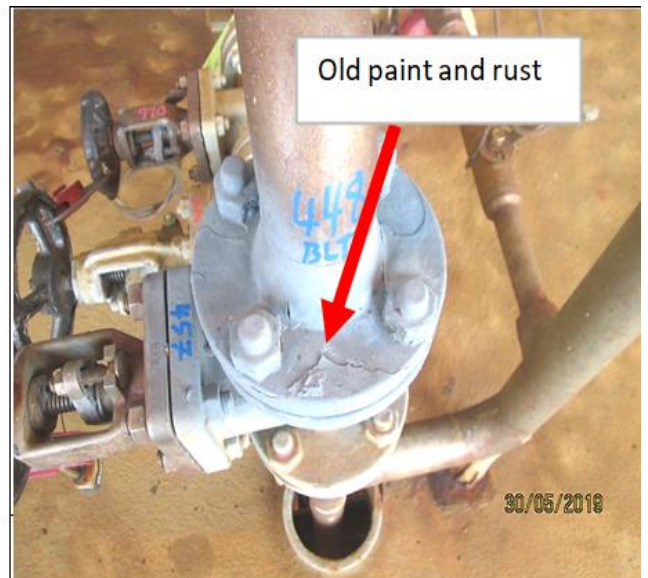
## EXAMPLE OF POOR ZINGA APPLICATION

LOCATION: E. M. YYY

DESCRIPTION: ZINGA APPLICATION AS SHOWN BELOW IS NOT ADEQUATE — THE SURFACE PREPARATION IS NOT DONE TO A PROPER STANDARD SINCE LOOSE PAINT AND RUST SCALES HAVE NOT BEEN REMOVED PROPERLY

PRODUCT: ZINGASPRAY

SURFACE PREPARATION: SSPC SP2 (HAND TOOL CLEANING)



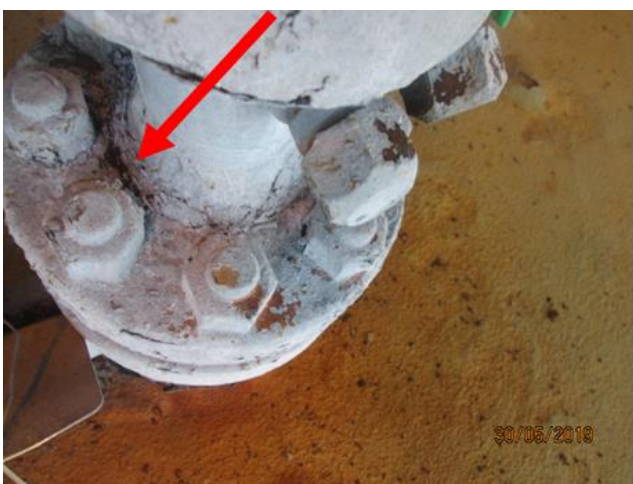
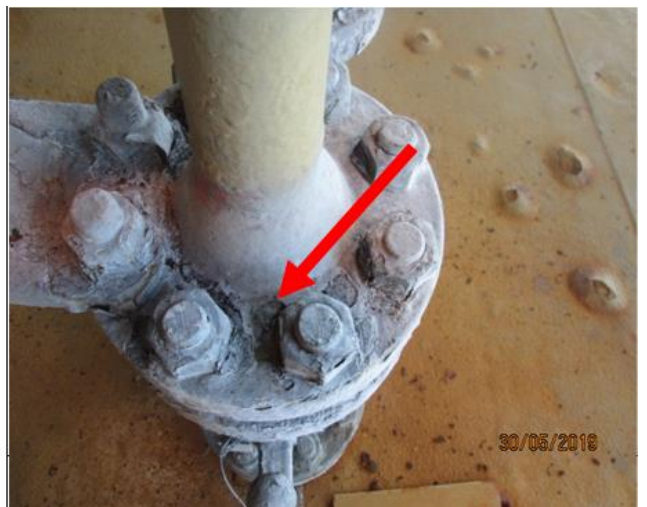


LOCATION: E. M. YYY

DESCRIPTION: ZINGA APPLICATION AS SHOWN BELOW IS NOT ADEQUATE — THE SURFACE PREPARATION IS NOT DONE TO A PROPER STANDARD SINCE LOOSE PAINT AND RUST SCALES HAVE NOT BEEN REMOVED PROPERLY

PRODUCT: ZINGASPRAY

SURFACE PREPARATION: SSPC SP2 (HAND TOOL CLEANING)



# FIMS 04 BULLETIN

## Benefits and Proper Surface preparation of ZINGA

### SURFACE PREPARATION [3 SIMPLE STEPS]

1. **DEGREASING TO REMOVE GREASE, CONTAMINATION AND OTHER FOREIGN MATTER**
2. **CHIPPING, WIRE-BRUSH AND WIPE WITH COTTON RAG TO ENSURE SURFACE IS FREE OF DUST, DEBRIS AND CLEAN**
3. **ZINGA IS TO BE SPRAYED FROM 4 TO 6 PASSES TO ACHIEVE THE REQUIRED THICKNESS OF 150 MICRONS**

### ADVANTAGES

- NO EQUIPMENT TO MOBILISE
- CHEAPER THAN BLASTING/POWER-TOOL SURFACE PREPARATION
- DONE BY ANY TRADESMAN
- ONLY HAND TOOLS REQUIRED
- APPLY COMPATIBLE TOP-COAT IF REQUIRED
- REQUIRE MINIMUM ONE PERSON TO PERFORM THE TASK

### TOOLS TO BE USED



### APPLICATION METHOD

- ZINGA AEROSOL SPRAY CAN
- ZINGA PAINT WITH BRUSH

### PPE REQUIREMENT

- 3M DUST MASK
- FACE SHIELD (DURING CHIPPING)



**NO SHORT CUTS**

**MUST COMPLY  
WITH MINIMUM**

**3 STEPS**

**OF SURFACE PREPARATION**



## EXAMPLE OF PROPER ZINGA APPLICATION

LOCATION: E. M. ZZZ

DESCRIPTION: VISUAL INSPECTION AT ONGOING WELLHEAD AREA FOUND

REMARKS BY PAINTING INSPECTOR: WORK DONE AT A SATISFACTORY LEVEL— AS PER REQUIREMENT AND IS PRESENTABLE; QUALITY WORK MUST BE MAINTAINED

PRODUCT: ZINGASPRAY

SURFACE PREPARATION: SSPC SP2 (HAND TOOL CLEANING)



LOCATION: E. M. ZZZ

DESCRIPTION: VISUAL INSPECTION AT ONGOING WELLHEAD AREA FOUND  
REMARKS BY PAINTING INSPECTOR: WORK DONE AT A SATISFACTORY LEVEL — AS PER  
REQUIREMENT AND IS PRESENTABLE; QUALITY WORK MUST BE MAINTAINED

PRODUCT: ZINGASPRAY

SURFACE PREPARATION: SSPC SP2 (HAND TOOL CLEANING)

